

# UNSEALED TOGGLE SWITCHES

FEATURING B2 & B3 BASIC SWITCHES

## 3-Position, 6 Pole, Lever Lock

### SPECIFICATIONS:

Position	Circuit	Force	Action
1	3PNO, 3PNC	Switch OFF	Maintained
2	6PNO	2.0 lbs. to 6.0 lbs.	Momentary
3	6PNC	2.0 lbs. to 6.0 lbs.	Locked

**Basic Switches:** Per MIL-PRF-8805/4 (except with integral lever)

**Operating Force:** 1.5 lbs. to 2.5 lbs.

**Rating:** 0.1mA to 1 amp Resistive @ 28VDC  
0.5 amp Inductive @ 28VDC

**Handle:** Stainless steel, dull nickel plate

**Cap, Handle:** Brass, dull nickel plate

**Bushing:** Stainless steel with black oxide finish

**Bracket:** Stainless steel

T1-0125



## 3-Position, 3 Pole

### SPECIFICATIONS:

Position	Actuation
Up	N.C., N.C., N.C.
Center	N.C., N.O., N.C.
Down	N.O., N.C., N.O.

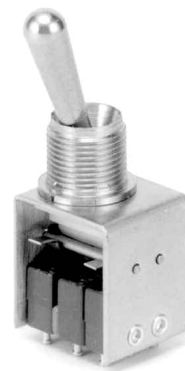
**Basic Switches:** Per MIL-PRF-8805/4

**Operating Force:** 1.0 lb. to 5.0 lbs.

**Rating:** 0.5 amp Inductive @ 28VDC  
300mA @ 5VDC Resistive  
Higher ratings available

**Mechanical Life:** 25,000 cycles

T1-0041



## 3-Position, 6 Pole

### SPECIFICATIONS:

Position	Circuit	Force	Action
1	3PNC, 3PNO	2.0 lbs. to 6.0 lbs.	Maintained
2	6PNC	N/A	N/A
3	3PNO, 3PNC	2.0 lbs. to 6.0 lbs.	Maintained

**Rating:** 1 amp Resistive @ 28VDC  
0.5 amp Inductive @ 28VDC

**Mechanical Life:** 25,000 cycles

**Bushing, Bracket & Lever:** Stainless steel

T1-0050-1



## Stainless Steel/Silicone Rubber Washer

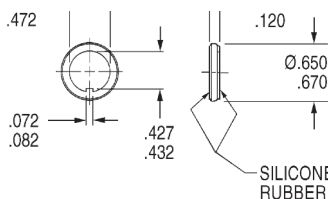
Stainless steel cup washer with silicone rubber seal assures proper watertight panel seal. Withstands 20 PSI water pressure. Mounts behind panel.

Approved to MIL-DTL-5423/16. Designed for sealing 15/32" bushing with keyway.

**OTTO P/N:** 710196

**MIL P/N:** M5423/16-01  
(was MS25196-1)

Thickness of bushing seal is reduced to 0.080" when mounted to panel.



## Mounting Hardware

### MILITARY P/N

### OTTO P/N

### BUSHING SIZE (inches)

#### KEYWAY WASHERS

MS25081-C0	710081-C0	0.250"
MS25081-C4	710081-C4	0.468"

#### INTERNAL TOOTH LOCKWASHERS

MS35333-135	710333-135	0.250"
MS35333-136	710333-136	0.468"

#### HEX NUTS—STANDARD

MS25082-C14	710082-C14	0.250-40
MS25082-C21	710082-C21	0.468-32