



SERIES 29 - 53 14

SINGLE POLE POWER RELAY 500 A

The Series 29 relays are designed as a single coil system suitable for demanding requirements in truck, bus, construction, ground support and fork lift vehicle applications.

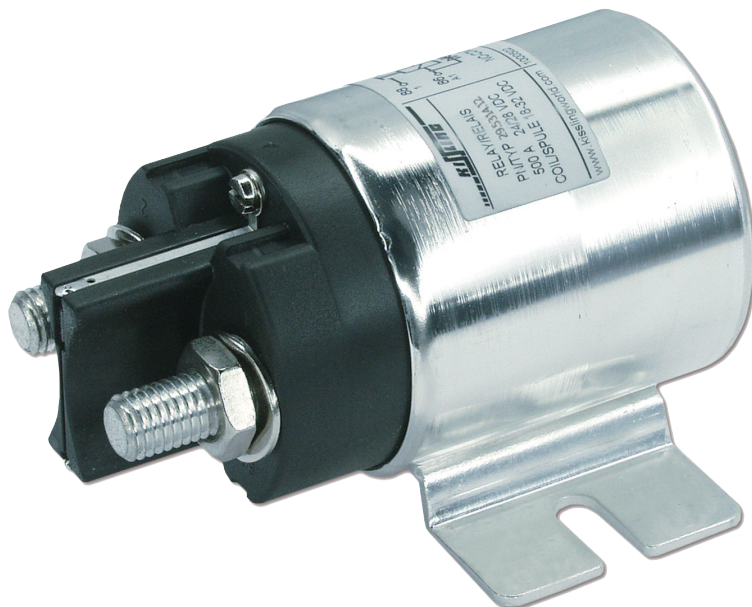
Available coil voltages are 12, 24, 36, 48, 60, 72, 80 and 110 VDC. Contact voltages up to 250 VDC are possible with blow-out magnet equipment. The compact design and minimized coil current are additional features.

The robust design of our power relays ensures a sealing rate of IP67 and IP6K9K in accordance with IEC 60529 and DIN 40050-9.

The 29-53 14 relay is specifically configured as an electrical and mechanical Drop-in-Replace for the LEV 200 product and profits from the general strengths of the KISSLING Series 29

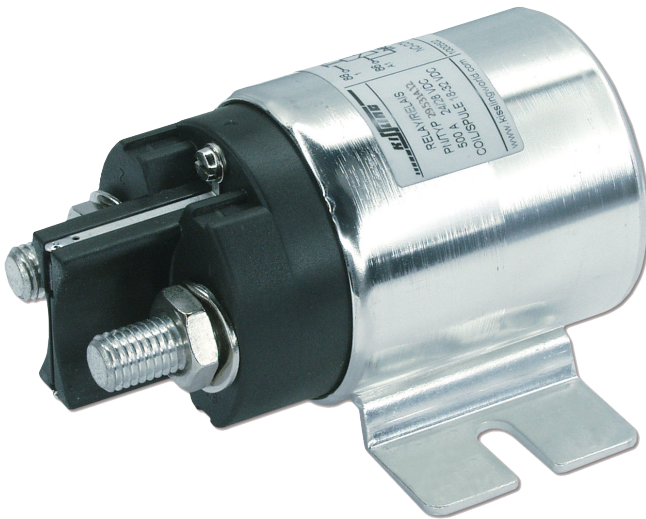
- 100% duty cycle
- Robust construction
- High quality
- Long life rating reduces vehicle warranty costs
- IP 67 and IP 6K9K rated
- Resistance against oils, fuels, hydraulic fluids, alcohol

„BEST IN CLASS“
QUALITY
AND
EXTENDED WARRANTY



WHEN IT HAS TO WORK

www.kissling.us



Technical Data

Environmentally Characteristics	
Temperature range	-40 °F to +185 °F
Protection	IEC 60529 & DIN 40050-9, IP 67 (0,2 bar; 1 min) & IP 6K9K
Shock	6 g / 11 msec
Vibration	4 g / 50 - 2000 Hz
Electrical Characteristics	
Dielectric withstanding voltage	100 MΩ
Contact drop after life test	175 mV
Continuous current	500 A (mcm 400)
Cycles	50 000 - 200 000
Mechanical life	2 000 000 cycles
Coil data	
Voltage range	9-90 VDC
Nominal voltage	12 VDC - 80 VDC
Coil resistance	15 Ω - 660 Ω
Coil current approx.	1 A (12 VDC) - 0.12A (80 VDC)
Coil power approx.	10 W
Operating times No-Contact relay	
Operate	max. 40 msec
Bounce	max. 5 msec
Release	max. 20 msec

WHEN IT HAS TO WORK

www.kissling.us