

COMMERCIAL & MILITARY GRADES

Features:

- MIL-S-3786/20 style available
- 1/2" diameter
- Optional seal for PC board assembly & cleaning available
- Choice of 36°, 45°, 60° & 90° angles of throw
- PC or solder lug termination
- Positive shaft grounding for EMI/RFI shielding available
- Screwdriver slotted shaft style available

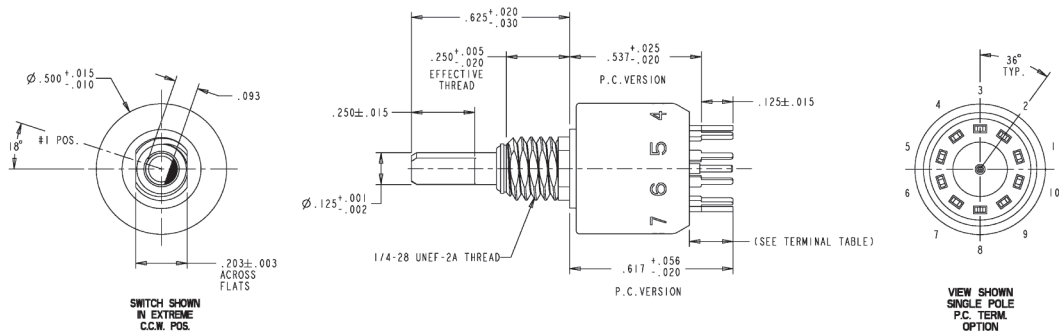


Standard Characteristics/Ratings:				
ELECTRICAL RATINGS:				
Load	@ 28VDC	@ 115VAC	@ 220VAC	Cycles
Resistive	200mA	N/A	N/A	25,000
Resistive	N/A	150mA	N/A	25,000
Inductive	30mA	N/A	N/A	25,000
Lamp	100mA	N/A	N/A	25,000
Lamp	N/A	N/A	75mA	25,000
DWV	600VAC min			
Low Level	10mA @ 30mV			
Contact Resistance	50mΩ max			
Electrical Life:	See chart above			
Mechanical Life:	25,000 cycles			
Seal:	Front panel seal Front panel seal and behind panel terminal seal			
Operating Temp Range:	-65°C to +85°C			
Rotational Torque:	8 to 24 inch-ounces			
Detent Angles:	36°, 45°, 60° and 90°			
Stop Strength:	7.5 inch-pounds min			
Contact Type:	Shorting or non-shorting wiping contacts			
Shaft Flat Orientation:	Flat opposite contacting positions of pole number one			
Terminals:	Switches are provided with the full circle of terminals, regardless of the number of active positions			
Bushing Mounting:	Required for switches with stops and recommended for switches without stops			
MATERIALS:				
Switch Base:	Thermoset			
Bushing:	Zinc, cadmium plate			
Terminals:	Brass, gold plate over silver plate			
Panel Seal:	Silicone rubber			
Shaft Seal:	Fluorosilicone			
Terminal Hardware:	None provided			
Mounting Hardware:	One mounting nut 0.089 inch thick by 0.375 inch across flats, one internal tooth lockwasher and panel seal when applicable			

1/2" DIAMETER MINIATURE ROTARY

R50
MINIATURE
ROTARY

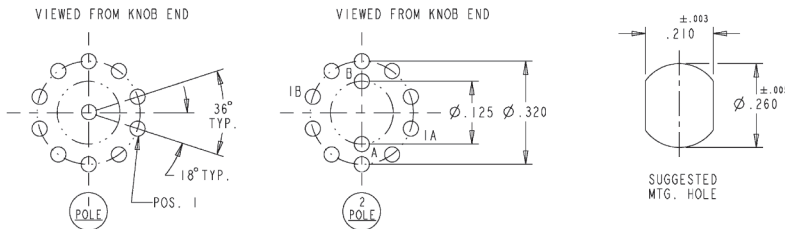
COMMERCIAL & MILITARY GRADES



NOTE: TERMINAL TABLE NOT TO SCALE, DIMENSIONS FOR REFERENCE ONLY.

TERMINAL TYPE	OUTER TERMINALS	COMMON TERMINALS
SOLDER LUG		
PC TERMINAL		

Angle of Throw	Number of Poles	Number of Positions Per Pole
36°	1	02 thru 10
	2	02 thru 05
45°	1	02 thru 08
	2	02 thru 04
60°	1	02 thru 06
	2	02 thru 03
90°	1	02 thru 04
	2	02



NOTE: 45°, 60° and 90° drawings available upon request.

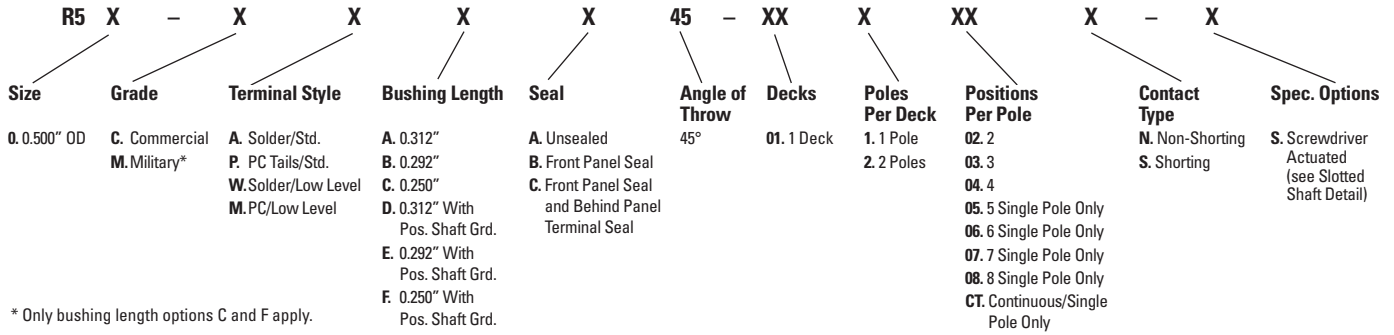
R50 PART NUMBER CODE (36°)

R5	X	-	X	X	X	X	36	-	XX	X	XX	X	-	X	
Size	Grade	Terminal Style	Bushing Length	Seal	Angle of Throw	Decks	Poles Per Deck	Positions Per Pole	Contact Type	Spec. Options					
0.500" OD	C. Commercial M. Military*	A. Solder/Std. P. PC Tails/Std. W. Solder/Low Level M. PC/Low Level	A. 0.312" B. 0.292" C. 0.250" D. 0.312" With Pos. Shaft Grd. E. 0.292" With Pos. Shaft Grd. F. 0.250" With Pos. Shaft Grd.	A. Unsealed B. Front Panel Seal C. Front Panel Seal and Behind Panel Terminal Seal	36°	01. 1 Deck	1. 1 Pole 2. 2 Poles	02. 2 03. 3 04. 4 05. 5 06. 6 Single Pole Only 07. 7 Single Pole Only 08. 8 Single Pole Only 09. 9 Single Pole Only 10. 10 Single Pole Only CT. Continuous/Single Pole Only	N. Non-Shorting S. Shorting	S. Screwdriver Actuated (see Slotted Shaft Detail)					

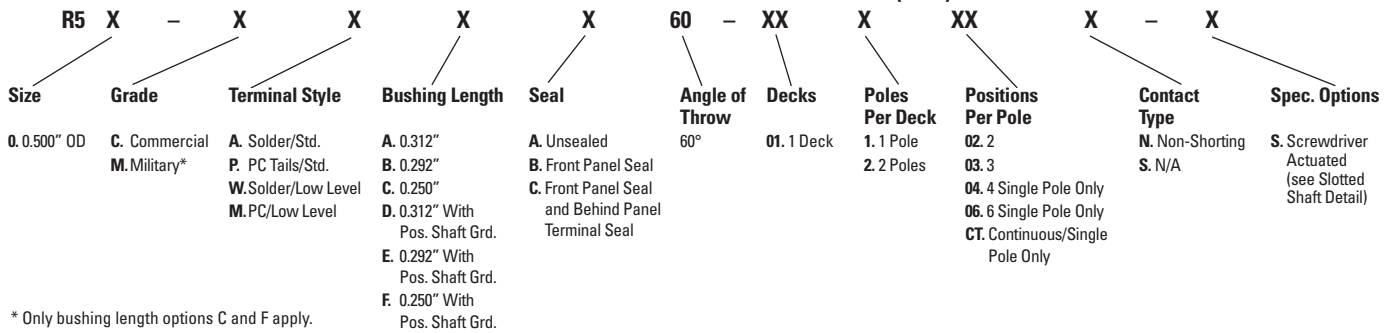
* Only bushing length options C and F apply.

COMMERCIAL & MILITARY GRADES

R50 PART NUMBER CODE (45°)



R50 PART NUMBER CODE (60°)



R50 PART NUMBER CODE (90°)

