

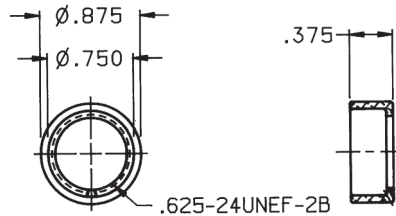
SHROUDS, PANEL SEALS & MOUNTING HARDWARE

Shrouds

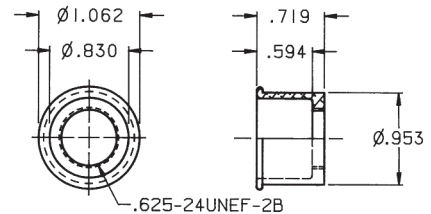
Shrouds are added to pushbutton switches to guard against inadvertent actuation. The actuating device must be inserted into the shroud in order to actuate the switch. We have an assortment from which to choose shown here. We are also able to design and fabricate a shape to meet your specifications and application needs.



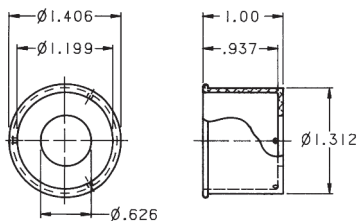
Material: Aluminum alloy, machined to specification.
Finish: Black anodized. For other color options, contact factory.



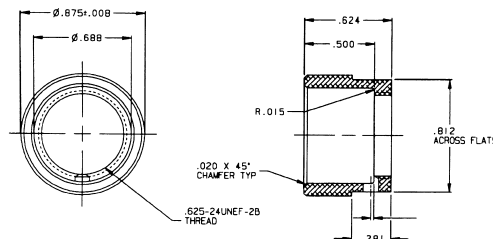
OTTO P/N C300793



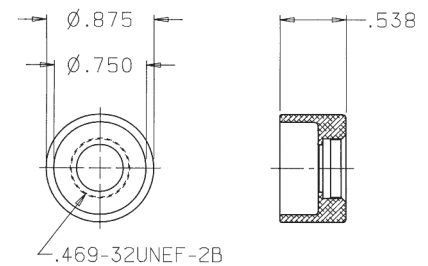
OTTO P/N C300514



OTTO P/N C300302



OTTO P/N C300871



OTTO P/N C300426

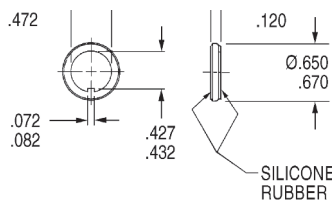
Panel Seals

Stainless Steel/Silicone Rubber Washer
Stainless steel cup washer with silicone rubber seal assures proper watertight panel seal. Withstands 20 PSI water pressure. Mounts behind panel.
Approved to MIL-DTL-5423/16. Designed for sealing 15/32" bushing with keyway.

OTTO P/N: 710196

MIL P/N: M5423/16-001
(was MS25196-1)

Thickness of bushing seal is reduced to 0.080" when mounted to panel.



Gaskets

OTTO P/N	I.D.
700117	0.250"
700110	0.469"
700109	0.625"

O-Rings (Buna)

OTTO P/N	I.D.
802568-010	0.250"
802568-015	0.500"
802568-016	0.625"

Mounting Hardware

MILITARY P/N

KEYWAY WASHERS

MILITARY P/N	OTTO P/N	BUSHING SIZE (inches)
MS25081-C0	710081-C0	0.250"
MS25081-C4	710081-C4	0.469"
MS25081-C6	710081-C6	0.625"

INTERNAL TOOTH LOCKWASHERS

MILITARY P/N	OTTO P/N	BUSHING SIZE (inches)
MS35333-135	710333-135	0.250"
MS35333-136	710333-136	0.469"
MS35333-138	710333-138	0.625"

HEX NUTS—STANDARD

MILITARY P/N	OTTO P/N	BUSHING SIZE (inches)
MS25082-C14	710082-C14	0.250-40
MS25082-C21	710082-C21	0.469-32
MS25082-B11	710082-B11	0.625-24

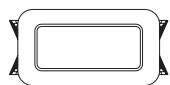
HEX NUTS—WIRE LOCKING

MILITARY P/N	OTTO P/N	BUSHING SIZE (inches)
MS21340-04	710340-04	0.469-32
MS21340-05	710340-05	0.625-24

All hardware is stainless steel except MS25082-B11 which is brass, black oxide plated.

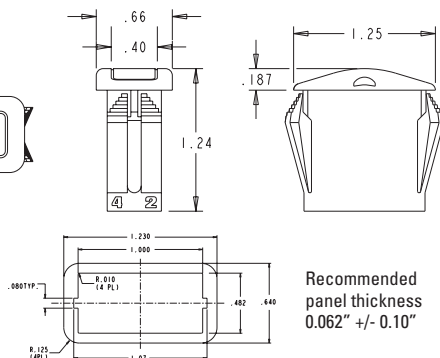
GASKETS, PANEL PLUGS & CONNECTORS

K1 Panel Plug



K1 Gasket

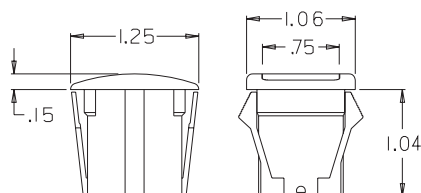
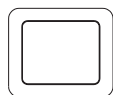
P/N 807039-1 0.062"
P/N 807039-2 0.031"



Recommended
panel thickness
0.062" +/- 0.10"

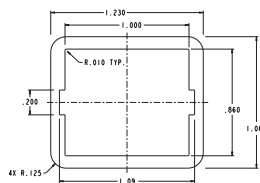
K2 Panel Plug

P/N C100695-2 Black
P/N C100695-9 White



K2 Gasket

P/N 807038-1 0.062"
P/N 807038-2 0.031"

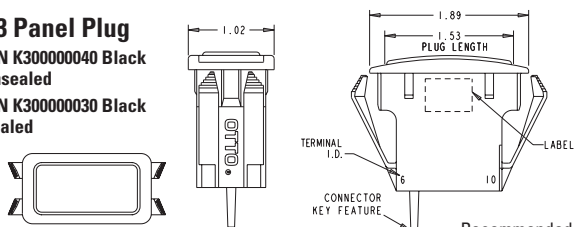


Recommended
panel thickness
0.062"

K3 Panel Plug

**P/N K300000040 Black
Unsealed**

P/N K300000030 Black Sealed

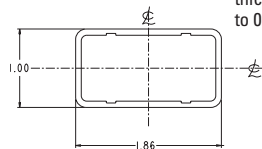


Recommended panel
thickness 0.025" min
to 0.187" max

K3 Panel Seal Gasket

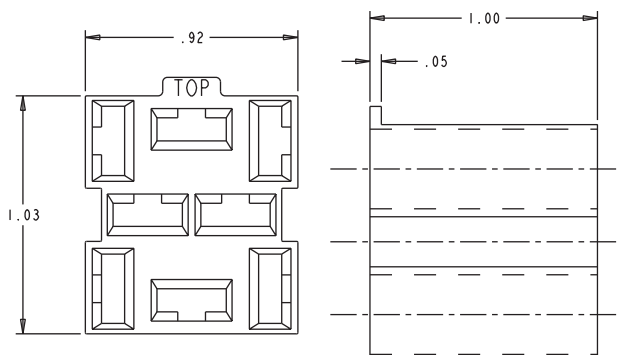
P/N 807037

Order separately for use with switches without drain holes.



K2, K4, T7 Connector

P/N C801765



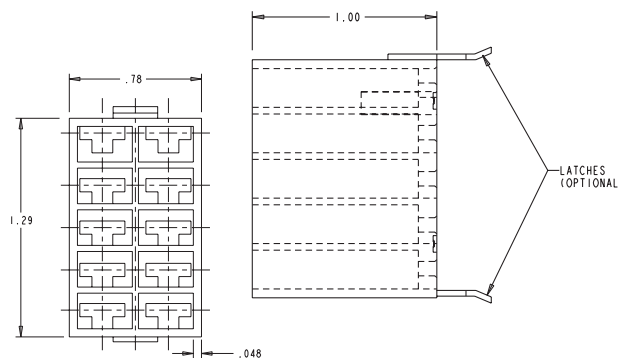
Recommended Quick Connect Terminals

AMP 60253-2 for 12-16 AWG wire with 0.160" to 0.210" insulation OD
AMP 42100-2 for 14-18 AWG wire with 0.100" to 0.170" insulation OD

K3, K5, R2 Connector

P/N 801775-2A Without Latches

P/N 801775-2B With Latches



Recommended Quick Connect Terminals

AMP 60253-2 for 12-16 AWG wire
AMP 42100-2 for 14-18 AWG wire

Toggle Guard

Meets the requirements of MIL-DTL-7703, MS25224-1, MS25224-3 and MS27752-1.

