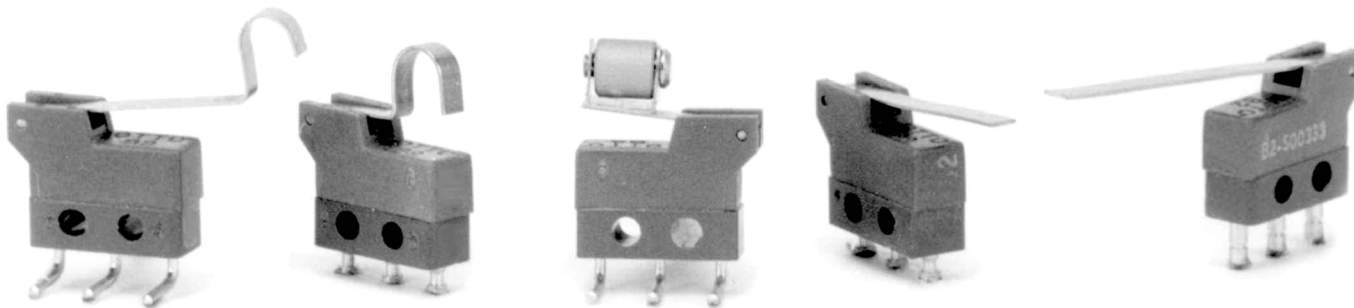


# B2 BASICS WITH INTEGRAL LEVERS

CHOICE OF STRAIGHT, FORMED OR ROLLER LEVERS



B2-500571

B2-500411

B2-501691

B2-500211

B2-500333

Shown are examples of available lever styles.

## B2-5 Integral Lever Basic Switches

B2-5 series basic switches feature integral actuating levers. The lever is built-in so that the switch and actuator are one assembly.

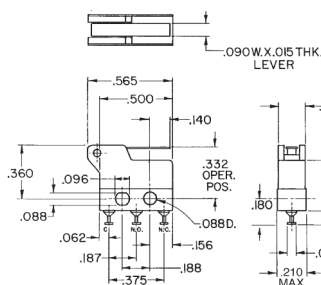
Making the lever actuator an integral part of the basic switch case makes sense and saves money, too. Better precision, no auxiliary parts for you to assemble, and more variety add up to a cost saving proposition.

## B2-5 PART NUMBER CODE

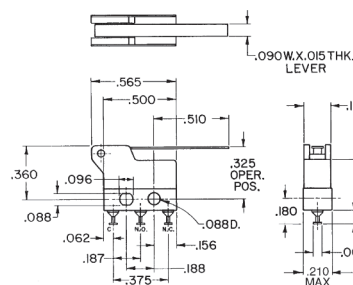
B2-5	X X X	X	X
<b>Actuator Identifier</b>	<b>Lever Style</b>	<b>Terminal Style ①</b>	<b>Contact Material</b>
Integral Lever Actuator Style	<ul style="list-style-type: none"> <li>001. Short Straight</li> <li>002. Medium Straight</li> <li>003. Long Straight</li> <li>004. Short Formed</li> <li>005. Long Formed</li> <li>016. Roller Lever Sideways</li> <li>019. Roller Lever In Line</li> </ul>	<ul style="list-style-type: none"> <li>1. Turret</li> <li>2. Double Turret</li> <li>3. Q.C. Tab ②</li> <li>4. PC Pin 0.150" lg.</li> <li>5. PC Pin 0.270" lg.</li> <li>6. PC Pin 0.090" lg.</li> <li>7. Right Angle PC</li> <li>9. Right Angle, Opposite of 7</li> </ul>	<ul style="list-style-type: none"> <li>1. Silver/Gold Flash</li> <li>3. Gold</li> </ul>

① For dimensional details for the other standard terminal styles available, consult the B2 information.  
② Mates with AMP 0.058" receptacles.

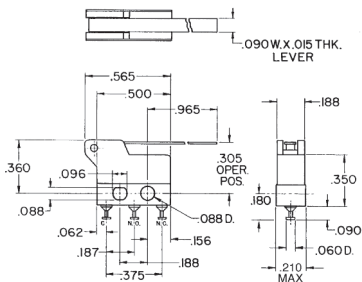
Lever Style	Catalog Number	STANDARD OPERATIONAL CHARACTERISTICS					
		Operating Force (max ounces)	Release Force (min ounces)	Pretravel (max inches)	Overtravel (min inches)	Move't Differ'l (max inches)	Operating Point (inches)
Short Lever	B2-500111	1.76	0.32	0.065	0.014	0.020	0.332 +/- 0.045
Medium Lever	B2-500211	1.10	0.18	0.115	0.025	0.035	0.325 +/- 0.075
Long Lever	B2-500311	0.71	0.11	0.185	0.046	0.060	0.305 +/- 0.115
Short Formed Lever	B2-500411	2.10	0.39	0.050	0.010	0.015	0.545 +/- 0.036
Long Formed Lever	B2-500511	1.10	0.18	0.105	0.022	0.035	0.559 +/- 0.065



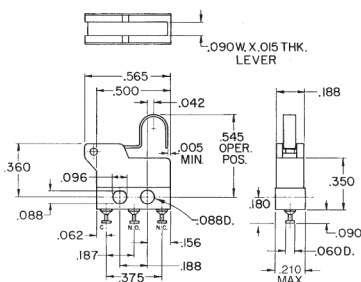
Short Straight Lever B2-500111



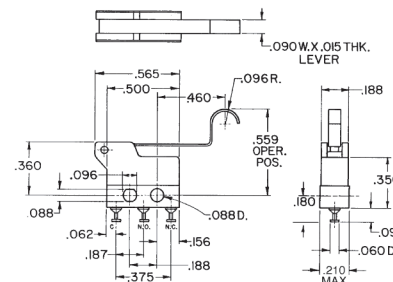
Medium Straight Lever B2-500211



Long Straight Lever B2-500311



Short Formed Lever B2-500411



Long Formed Lever B2-500511